

NP-660S

RISC-based operator interface terminal with 5.7" flat panel display

User's Manual



Copyright	4
SafetyInstructions	5
Chapter1Introduction	6
1.1Introduction	6
1.2Specifications.....	5
Chapter2InstallationInstructions.....	8
2.1MountingInstructions.....	8
2.1.1LocationConsiderations	8
2.1.2MakingaNEMA-4Mounting	8
2.1.3EnvironmentalConsiderations	9
2.2PowerConnections	9
2.2.1PowerRequirements.....	10
2.2.2GroundingRequirements.....	11
2.2.3CERrequirements	11
2.2.4SafetyGuidelines.....	11
2.3CommunicationsConnections	13
2.3.1ConnectorCOM1[RS232].....	13
2.3.2ConnectorCOM2[RS232],COM3[RS485]andCOM3[RS232].....	14
2.3.3USBMaster.....	14
2.3.4DipSwitch	16
2.4CERrequirements	17
2.5DimensionsofNP-660S	18
Chapter3WindowsCE.NET.....	19
3.1Introduction	19
3.2Utilities	19
3.2.1Soft-Keyboard	19
3.2.2SystemSettings.....	20
3.2.3NORFlash	24
3.2.4Startup.....	24
3.2.5RemoteDesktopConnection	25
3.3NP-660SNetworking	27
3.3.1NetworkingviaEthernet.....	27
3.3.2ActiveSync	28
3.3.3Webbrowser	29
3.4Applicationprogramdevelopment	30
3.4.1MicrosofteMbeddedVisualC++4.0	30
3.4.2EP931XSDK.....	31

3.5Print.....31

Copyright

This document is copyrighted April, 2005, by IVCD Displays, Inc. All rights are reserved. IVCD Displays, Inc. reserves the right to make improvements to the products described in this manual at any time. Specifications are thus subject to change without notice.

No part of this manual may be reproduced, copied, translated, or transmitted in any form or by any means without the prior written permission of IVCD Displays, Inc. Information provided in this manual is intended to be accurate and reliable. However, IVCD Displays, Inc. assumes no responsibility for its use, nor for any infringement upon the rights of third parties which may result from its use.



Safety Instructions

Overview

This section states the safety instructions, which must be followed when installing, operating and servicing the NP-660S. If neglected, physical injury and death may follow, or damage may occur to controller and related equipment. The material in this chapter must be studied before attempting any work on, or with, the unit.

Warnings and Notes

This manual distinguishes safety instructions. Warnings are used to inform of conditions, which can, if proper steps are not taken, lead to a serious fault condition, physical injury or death. Notes are used when the reader is required to pay special attention or when there is additional information available on the subject. Notes are less crucial than warnings, but should not be disregarded.

Warnings Readers are informed of situations that can result in serious physical injury and/or serious damage to equipment with the symbol shown to the left. A Warning symbol indicates that the reader should pay special attention to the accompanying text. Precautionary steps should be taken to insure that the installation is in compliance with warnings. Warnings include hazardous conditions that could cause personal injury or equipment damage if care is not taken. The text next to this symbol describes ways to avoid the danger.



Warnings **Dangerous Voltage Warnings:** Warns of situations in which high voltage can cause physical injury and or damage equipment.

General warning: Warns of situations, which can cause physical injury and or damage equipment by means other than electrical.

Electrostatic Discharge Warning: Warns of situations in which an electrostatic discharge can damage equipment.

Readers are notified of the need for special attention or additional information available on the subject with the following symbols:

CAUTION! Aim to draw special attention to it.

Note: **Note:** gives additional information or points out more information available on the subject.

Chapter 1 Introduction

1.1 Introduction

The MT606 is a miniature and compact platform that has no redundant functions. It is designed for small-sized operator interface market. Its RISC kernel, the CIRRUS LOGIC EP9135 200MHz processor design with a memory management unit (MMU), that supports Windows CE. The ARM920T's 32-bit microcontroller architecture, with a five-stage pipeline, delivers impressive performance at very low power.

The EP9315 includes a hardware graphics acceleration engine that improves graphic performance by handling block copy, block fill and hardware linedraw operations.

The graphics accelerator is used in the system to offload graphics operations from the processor.

Features

- Built-in flash memory and Windows CE OS inside
- All in one platform: the CPU, DRAM and Windows CE are integrated
- Low power consumption and Fan-less
- NEMA4/IP65 compliant front panel
- One CompactFlash™ slot
- Audio
- Ethernet port (10/100 Base-T)

1.2 Specifications

- Construction: plastic molding housing
- Display: 5.7" QVGA Color STN LCD
- CPU and core logic: CIRRUS LOGIC EP9315 200MHz ARM920T core processor
- DRAM: 64MB on board
- Storage: 32MB flash memory on board
- 1 CompactFlash™ card slot
- I/O: 3 serial ports
Com1: RS-232/RS-485 2w/4w,
Com2: RS-232,
Com3: RS-232/RS-485 2w
- 1 Ethernet port (10/100 Base-T)
- 2 USB 2.0 full-speed host (12Mbps)

- Soundoutput:20-bitsStereooutput
- RTC:Built-in
- Powerinput:24VDC,0.5Amaximum
- Dimension(WxHxD):204x150x48mm
- Weight:0.85kg

FUSE

- BUSSMANNFastActing,GlassTube
- Rating:250VAC,1A
- Size:5x20mm

LCDDisplay

- Displaytype STNcolorLCD
- Displaysize(diagonal) 5.7"
- Maxcolors 4096
- Resolution320x240
- Pixelpitch(HxV,mm) 0.246x0.246
- Viewingangle(°) 40/30/50/50(T/B/R/L)
- Luminance(cd/m2) 150
- Storagetemperature(°C) -20~60
- Operatingtemperature(°C) 0~45
- Backlight CCFLx1
- Contrastratio 30:1

Touchscreen

- Type:4-wire,analogresistive
- Resolution:continuous
- Lighttransmission:above80%
- Life:1millionactivationminimal

EnvironmentalSpecifications

- Operatingtemperature:0°~45°C(32°~113°F)
- Relativehumidity:10%~90% @40°C,non-condensing
- Shock(operation):10to25Hz(X,Y,Zdirection2G30minutes)
- EMI:CompliesFCCclassA
- CE:ComplieswithEN50081-2andEN50082-2standards
- FrontpanelmeetsNEMA4/IP65

Chapter 2 Installation Instructions

2.1 Mounting Instructions

2.1.1 Location Considerations

Caution should be taken when locating equipment behind the unit to ensure that AC power wiring, PLC output modules, contactors, starters and relays, and any other source of electrical interference are relocated away from the back of the unit.

Particular notes should be taken to the position of variable speed drives and switching power supplies. Their input and load cables should be screened to a central star earth point.

2.1.2 Making a NEMA-4 Mounting

Panel Details The unit can be mounted into panels with a depth of 4" (105mm). It is recommended that the unit be mounted on the front panel of a steel enclosure, through an appropriate opening*. Allow a clearance of 1" (25mm) around the sides of the unit for mounting hardware. Allow clearance for cable connection to the back of the unit. Unit depth may vary according to cable type used. Typically, panel depth to accommodate at least 4" (105mm) behind the panel.

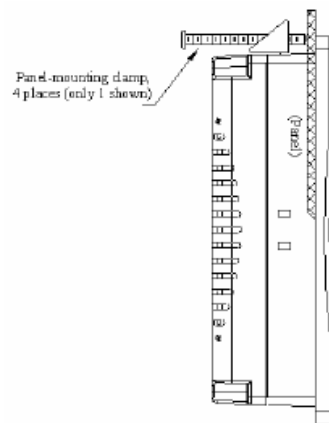
NEMA-4 Mounting Put the unit through the panel cutout. Slide the clamps into the 6 holes provided around the case. Tighten the clamping screws in an even pattern until the unit is secured in the panel.

Caution! Do not over-tighten mounting clamps!

Note: Specifications Note:
To seal to NEMA-4 specifications, all supplied mounting clamps must be used and panel cannot flex more than 0.010".

2.1.3 Environmental Considerations

- The NP-660S are to be used indoors as built-in displays. Make sure that the displays are installed correctly and that the operating limits are followed (See Specifications).
- Do not operate the unit in areas subject to explosion hazards due to flammable gases, vapors or dusts.
- The units should not be installed where fast temperature variations and/or high humidity are present. This will cause condensation of water in the device.
- Do not install these terminals in environments where there are flammable gases.



Side View

2.2 Power Connections

Make sure that all local and national electrical standards are met when installing the unit. Contact your local authorities to determine which codes apply.



2.2.1 Power Requirements

Power	The NP-660S can be powered by DC power only. The specified voltage range is +21 to 25 Volts DC. This ensures compatibility with most controller DC systems. The power conditioning circuitry inside the unit is accomplished by switching power supply. The peak starting current can be as high as 700mA.
Fusing Requirements	If the display does not come on within 2 seconds of power up, remove power. An internal fuse will prevent damage if the polarity of the DC power is incorrect. Check wiring to insure proper connections and try to power up again.
Caution High Voltage	An internal fuse will prevent damage for overvoltage condition however it isn't guaranteed. DC voltage sources should provide proper isolation from main AC power and similar hazards.
Caution Emergency Stop	A Hard-wired EMERGENCY STOP should be fitted in any system using an NP-660S to comply with ICSSafety Recommendations.
Caution Supply Voltage Condition	Do not power the NP-660S and inductive DC loads, or input circuitry to the controller, with the same power supply. Note: The 24 VDC output from some controllers may not have enough current to power the NP-660S.
Caution Wire Routing	Wire length should be minimized (Maximum 1600' (500m) shielded, 1000' (300m) unshielded). Wire should be run in pairs with a neutral or common paired with a hot or signal line. If wiring is to be exposed to lightning or surges, use appropriate surge suppression devices. Keep AC, high energy, and rapidly switching DC wiring separate from signal wires. Equip ungrounded DC supplies with a resistor and capacitor in parallel to earth ground. This provides a path for static and high frequency dissipation. Typical values to use are 1 MOhm and 4700pF.
Connection	To make a connection, strip about 3/8" of insulation off the end of the wire, turn the connector screw counter clockwise until the gap is wide open, insert the wire all the way in, and turn the screw clockwise until it's tight. Connect positive DC line to the '+24V' terminal and the DC ground to the 'GND' terminal.



FUSE Replacement:

The fuse used on MT608 is:

BUSSMANN

Fast Acting, Glass Tube

Rating: 250VAC, 1A

Size: 5x20mm

Warning:



1. Make sure the power is off before replacing the fuse.
2. Do not replace the fuse with a different rating fuse.

2.2.2 Grounding Requirements

Chassis ground must be used. DC ground is not directly coupled to Earth ground internally. It is preferable not to ground DC negative return to chassis ground as poor site earths can introduce noise into a system, but if necessary an earth connection should be made from the power supply return point to the central star earth point. Ground conductors should be as short and as large in size as possible. The conductors must always be large enough to carry the maximum short circuit current of the path being considered. Ground conductors should be connected to a tree from a central star earth ground point. This ensures that no ground conductor carries current from any other branch.

2.2.3 CE Requirements

To make an NP-660S comply with EMC directives, and to reduce susceptibility to electrical interference, a separate #14 AWG ground wire should be taken to the chassis ground terminal of the power connector. This ground connection should be run directly to the central star earth connection point (as recommended in most Installation Instructions).

2.2.4 Safety Guidelines

This section presents recommended installation practices, and procedures. Since not all applications are identical, these recommendations should be considered as guidelines.

Hardware Considerations **WARNING!**

The system designers should be aware that devices in Controller systems could fail and thereby create an unsafe condition. Furthermore, electrical interference can annoy an operator.

interface, such as an NP-660S, can lead to equipment start-up, which could result in property damage and/or physical injury to the equipment operator.

If you, or your company, use any programmable control systems that require an operator or attendant, you should be aware that this potential safety hazard exists and take appropriate precautions. Although the specific design steps depend on your particular application, the following precautions generally apply to installation of solid-state programmable control devices. In addition, these precautions conform to the guidelines for installation of Controllers as recommended in the NEMA ICS3-304 Control Standards.

Programming Considerations

To conform with ICSS Safety Recommendations, checks should be placed in the controller to ensure that all writable registers that control critical parts of plant or machinery have limit checks built into the program, with an out-of-limits safe shutdown procedure to ensure safety of personnel.

ICS3-304.81 Safety Recommendations:

Considerations should be given to the use of an emergency stop function, which is independent of the programmable controller.

Where the operator is exposed to the machinery, such as in loading or unloading a machine tool, or where the machine cycles automatically, considerations should be given to the use of an electromechanical override or other redundant means, independent of the programmable controller, for starting and interrupting the cycle.

If provision is required for changing programs while the equipment is in operation, considerations should be given to the use of locks or other means of assuring that only authorized personnel can make such changes.

These recommendations are intended as safeguards against the failure of critical components and the effects of such failures or the inadvertent errors that might be introduced if programs are changed while the equipment is in operation.*

- The ICS3-304.81 Safety Recommendations are reproduced by permission of the National Electrical Manufacturers Association from NEMA ICS3-304

2.3 Communications Connections

The ports as you look at the back of the case, are the ports for connecting to a PLC or some external device (Controller Connectors).

Cable Requirements

Different cables are required for various devices.

Caution

Restrict cable length to less than 500' (150m) for RS485/422 devices and 50' (15m) for RS232 devices to avoid communications problems.

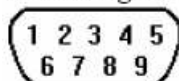
Shielded cable must be used for long lengths or cables run in an electrically noisy environment.

Do not run cables next to AC power lines or near sources of electrical noise.

Be sure that the cable ends have been inserted all the way into mating connectors and are secure.

2.3.1 Connector COM1 [RS232]

Pin Designations



COM1 [RS-232]

COM2 [RS-232]

Pin assignment of the 9 Pin, Male,

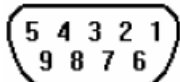
SUB-D, COM1 [RS-232] and COM2 [RS-232] Port.

Pin#	Symbol	COM1 [RS232]	COM2 [RS232]
1	Not used		
2	RxD	Received Data	
3	TxD	Transmitted Data	
4	TxD		Transmitted Data
5	GND	Signal Ground	
6	RxD		Received Data
7	RTS	Ready to send output	
8	CTS	Clear to send input	
9	Not used		

2.3.2 Connector COM2[RS232], COM3[RS485] and COM3[RS232]

Connection

Pin Designations



COM1 [RS-485]
COM3 [RS-485]
COM3 [RS-232]

Pin assignment of the 9 Pin, Female, SUB-D COM1 [RS-485], COM3 [RS-485] and COM3 [RS-232] Port

Pin#	Symbol	Com1 [RS485]2w	Com1 [RS485]4w	Com3 [RS485]	Com3 [RS232]
1	Rx-	Data-	Rx-		
2	Rx+	Data+	Rx+		
3	Tx-		Tx-		
4	Tx+		Tx+		
5	GND	Signal Ground			
6	Data-			Data-	
7	TxD				Transmit
8	RxD				Receive
9	Data+			Data+	

COM3[RS-485]connect
RS-4852wireDevice

NP-660SV1
COM1[RS-485]
9PD-SUBFemale

4	Data+
5	Data-
1	GND

RS-4852wireDevice

	Data+
	Data-

COM3[RS-485]connect
RS-4854wireDevice

NP-660SV1
COM1[RS-485]
9PD-SUBFemale

1	Rx-
2	Rx+
3	Tx-
4	Tx+
5	GND

RS-4854wireDevice

Tx-	RS485Transmit
Tx+	RS485Transmit
Rx-	RS485Receive
Rx+	RS485Receive

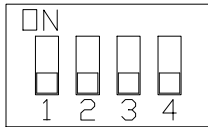
2.3.3 USB Masterport

The USB Masterport can connect USB mouse and USB keyboard.

The USB Masterport support USB 2.0 full-speed host (12Mbps).

This port support USB Mass storage device. But the USB hard disk must use external power. r.

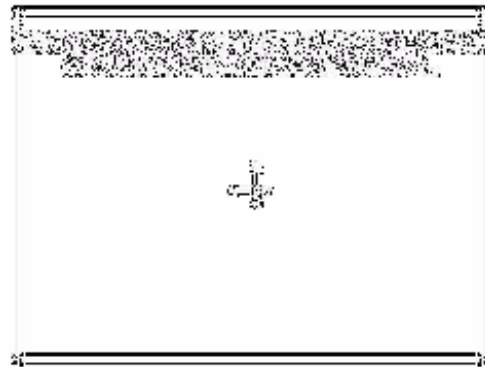
2.3.4 Dip Switch



SW1	SW2	SW3	SW4	Mode
ON	OFF	OFF	OFF	Touch Screen Calibrate mode
OFF	ON	OFF	OFF	Reserve
OFF	OFF	ON	OFF	Boot Loader mode
OFF	OFF	OFF	ON	Reserve
OFF	OFF	OFF	OFF	Normal

Pin3,4unused

- **TouchScreenCalibrate mode:** In this mode when you power on the NP-660S, the screen will display a “+” sign at the center of the screen. Use a stylus or fingertip to push the center of the “+” until it moves. The “+” moves to upper-left, lower-left, lower-right and upper-right corners. When all five “+” are done the “+” will disappear. The TouchScreen parameter will store at FlashRom.



- **BootLoader mode:** Load new Windows CE image file. If the NP-660S already load the CE image with boot loader. Set the DIP SW3 ON then power ON into boot loader mode. Refer the load Win CE image document.

2.4 CE Requirements

EU directives that apply to the NP-660S Series:

- EMC Directive (89/336/EEC, 92/31/EEC, 93/68/EEC) electromagnetic emissions and immunity
- Machinery Directive (89/392/EEC, 91/368/EEC, 93/44/EEC, 93/68/EEC) machine safety
- NP-660S products will be CE-marked to indicate compliance with the EMC Directive

The NP-660S Series has been designed to operate satisfactorily in electromagnetic noise (immunity) and without emitting high levels of electrical noise into the environment (emission). The units are designed to meet European Community standards when installed per the wiring instructions in this manual.

Compatibility Standards

The NP-660S has been designed to meet electromagnetic compatibility for industrial environments.

- CISPR (EN 55011) Group 1, Class A Radiated Emissions levels
- EN 50081-2 Generic emission standard, industrial environment (Also US FCC Class A)
- EN 50082-2 Generic immunity standard, industrial environment

Chapter 3 Windows CE.NET

3.1 Introduction

The NP-660S series operator interface terminal is designed to serve on the Windows CE platform. Windows CE.NET is the successor to Windows CE 3.0. Designed from the ground up for the embedded marketplace, Windows CE.NET delivers a robust real-time operating system for rapidly building the next generation of smart mobile and small footprint devices. With a complete operating system feature set and end-to-end development environment, Windows CE.NET contains everything you need to create a custom Windows CE-based device that requires rich networking, hard real-time, and a small footprint, as well as rich multimedia and Web browsing capabilities.

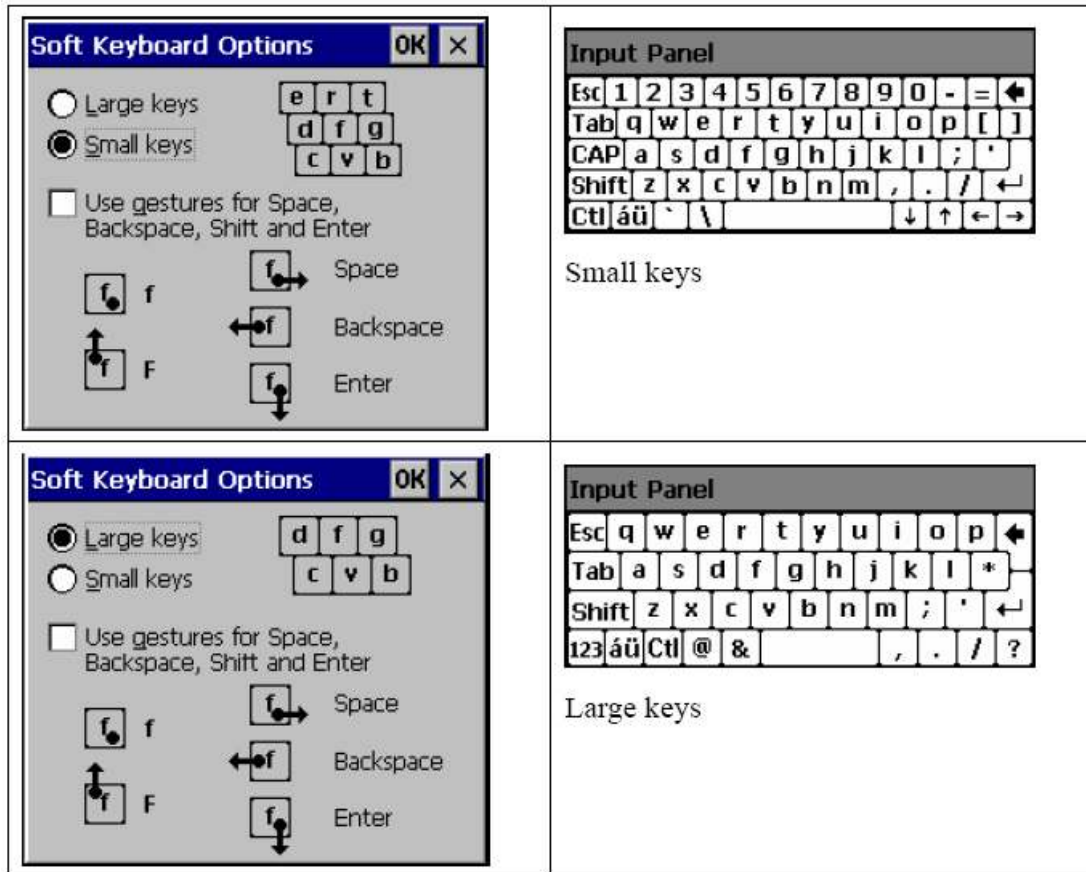


3.2 Utilities

There are several useful utilities built in the standard Windows CE OS of NP-660S:


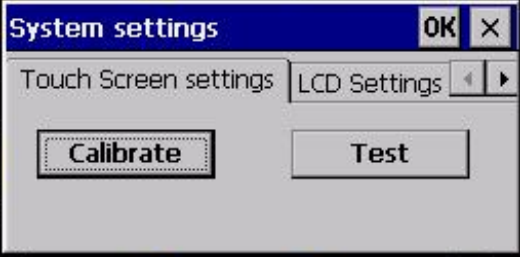
3.2.1 Soft-Keyboard

The NP-660S is dedicated to the small-sized operator interface. It is often inconvenient for users to attach a keyboard to such a small machine. Thus, a software keyboard is embedded in the standard Windows CE OS. Upon boot-up, a small keyboard icon will appear on the status bar. Tap this icon by the stylus to activate this Soft-keyboard. e/hide



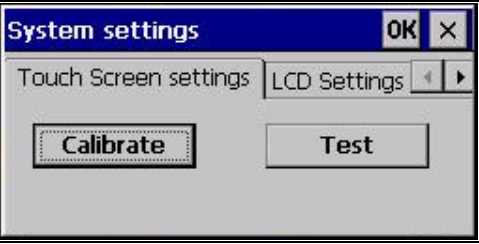
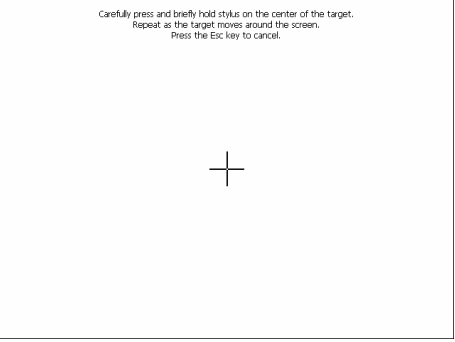
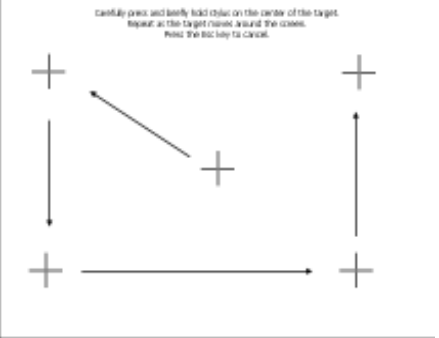
3.2.2 System Settings

NP-660S provides an integrated utility for users to make basic setting of the machine.

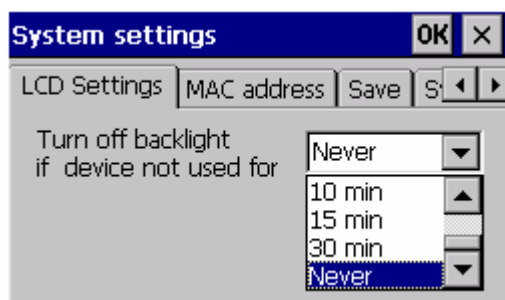
Step		
1.	Tap the "cecp" icon from Desktop.	
2.	Launch the System Settings Control Panel.	

Touch Screen settings

The touch screen calibration can be executed from the Control Panel.

Step		
1.	Launch the System Settings Control Panel.	
	Tapping the “Calibrate” button. The screen will display a “+” sign at the center of the screen.	
	Use a stylus or fingertip to push the center of the “+” until it moves. The “+” moves to upper-left, lower-left, lower-right and upper-right corners. When all five “+” are done the “+” will disappear. The Touch Screen parameter will store at Flash Rom.	

Backlight

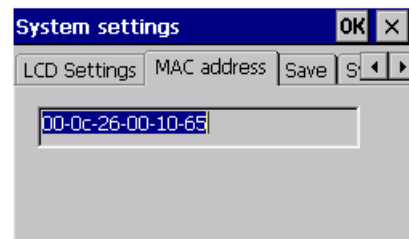


“LCDSettings” page of the **cec** provides the function to turn off the LCD backlight, and thus elongate the period of service. For example, if the user wants the backlight turned off automatically after 10 minutes when the device was no longer used. The user must select “10 minutes” in the put down box and then press “OK” button. Then the screen save function is enabled. Once the backlight was turned off, events or perturbations from the touch screen can't turn it on.

On the other hand, if users want to disable the screensave function, select “Never” and press “OK” button.

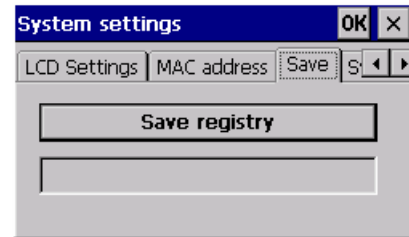
MAC address

The MAC address page the block shows the network MAC address.



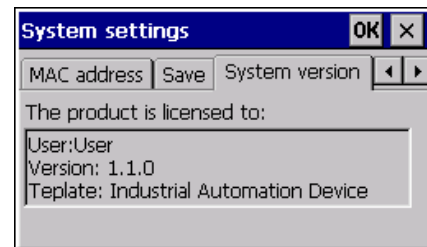
Save

Tap the Save registry button, would save the registry data to the **NORFlash** folder. Next time reboot the NP-660S, Windows CE system will use the stored registry data.



System version

Show current CE image version.

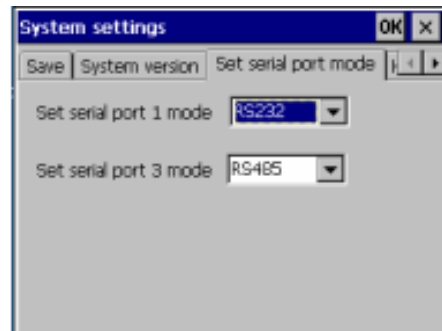


Set serial port mode

Set Com1 mode. Select RS232/RS485 2 wire or 4 wire mode.

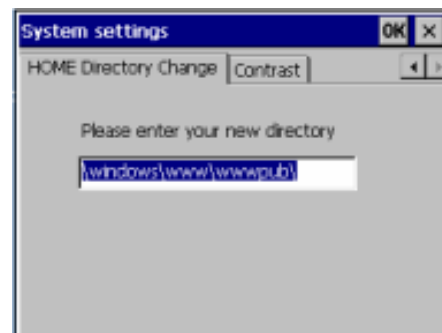
Set Com3 RS232/RS485 mode.

The serial port mode can be saved by "Save registry".



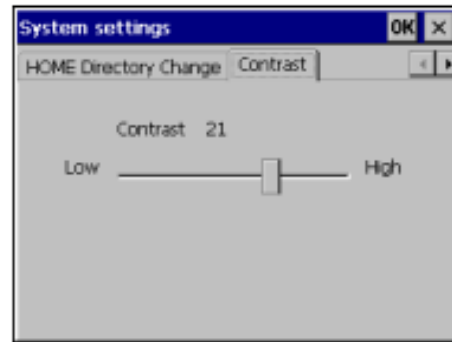
HOME Directory Change

This can set the Web Server directory. (Must reboot HMI)



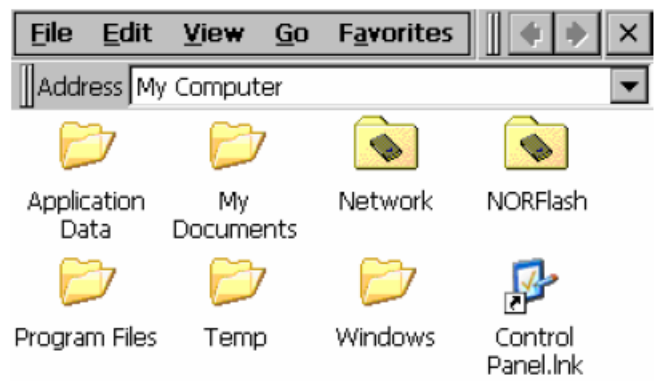
Contrast

Adjust the LCD contrast.



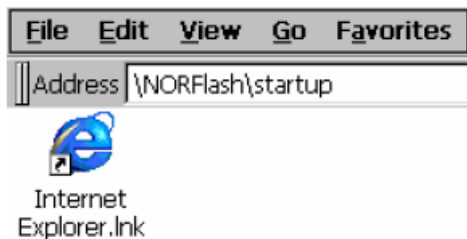
3.2.3 NORFlash

 The NORFlash serves as a small capacity hard disk. You can store your data and application in the Flash ROM via NORFlash function to prevent unexpected loss of data as power failure. When power is shut down and cold boot, the data in the Flash ROM are would be saved.



3.2.4 Startup

After the system boot up, the startup execution function would automatically perform. This function is useful for control system to do the initialization processes or some other programs.



Step 1: Create "startup" directory in "\\NORFlash\".

Step 2: Copy executable files or Shortcuts to "Startup" directory which is created in Step 1.

An alternative way to set up startup files is to make a shortcut and copy it to "NORFlash\StartUp". A shortcut can execute a program with parameters.

Follow the following procedure to create the shortcut (.lnk) file.

A .lnk file is a text file that contains the command line for the linked target, which

maybe enclosed in double quotation marks, along with the length of that command line. Optionally, you can also pass parameters into the linked target. For example, to start MyApp.exe and pass two optional parameters into the application, a sample MyApp.lnk file contains the following.

```
\Windows\MyApp.exe parameter1 parameter2
```

3.2.5 Remote Desktop Connection

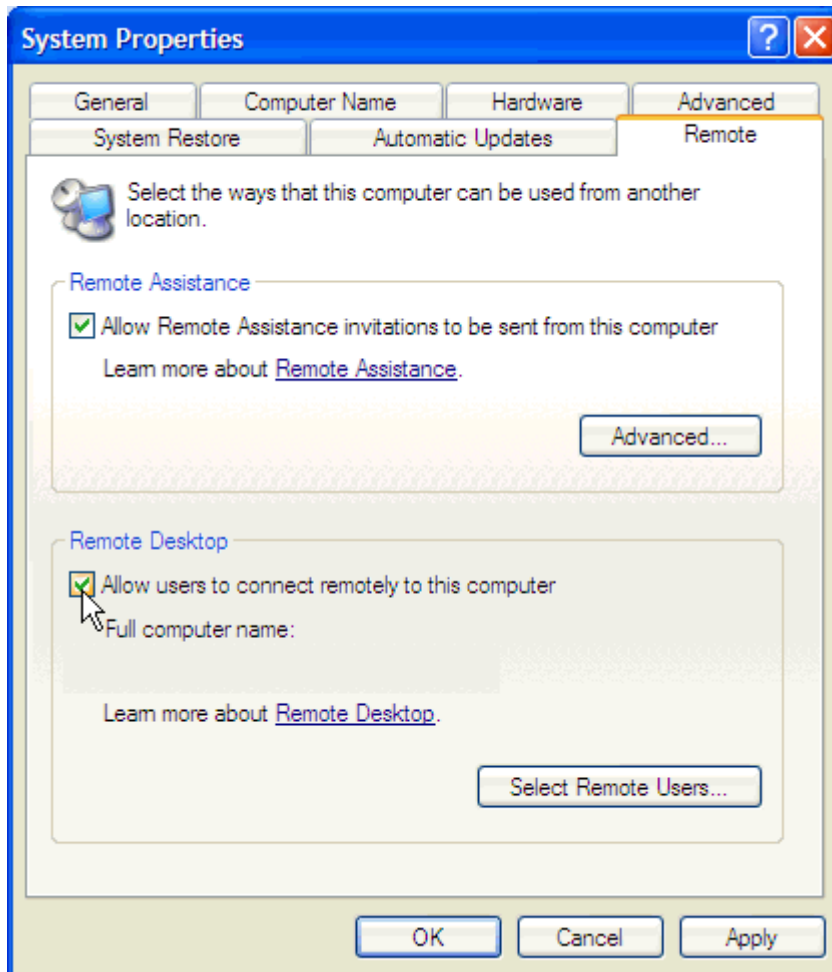


Use Remote Desktop Connection if you can remotely control your computer.

To use Remote Desktop, you need the following:

Windows XP Professional installed on your office computer, or whichever computer you plan to operate remotely. This computer is known as the host.

You must first enable the Remote Desktop feature on your office computer so that you can control it remotely from another computer. You must be logged on as an administrator or a member of the Administrators group to enable Remote Desktop on your Windows XP Professional-based computer.



To create a new Remote Desktop Connection




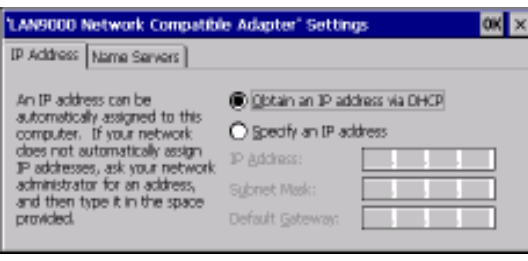
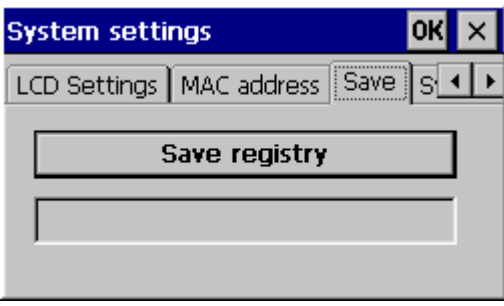
1. Open Remote Desktop Connection.
2. In Computer, type the computer name for your computer running Windows XP Professional that has Remote Desktop enabled and for which you have Remote Desktop permissions.
3. Click **Connect**. The **Log onto Windows** dialog box appears.
4. In the **Log onto Windows** dialog box, type your username, password, and domain (if required), and then click **OK**. The Remote Desktop window will open and you will see the desktop settings, files, and programs that are on your office computer. Your office computer will remain locked. Nobody will be able to work at your office computer without a password, nor will anyone see the work you are doing on your office computer remotely.

Note: To change your connection settings, (such as screen size, automatic logon information, and performance options), click Options before you connect.

3.3 NP-660S Networking


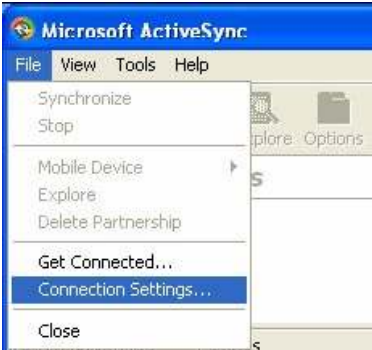

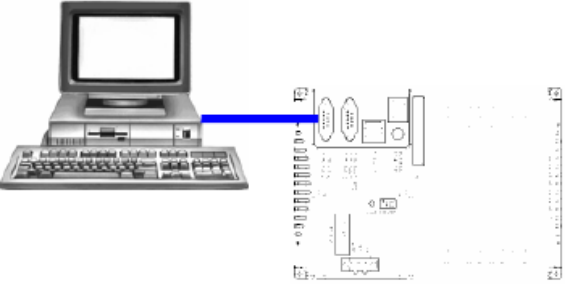
3.3.1 Networking via Ethernet



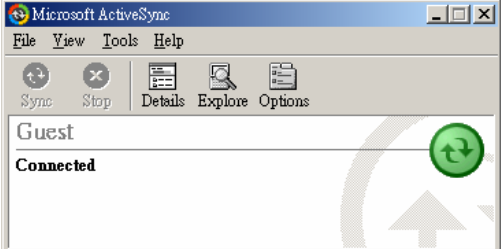
The NP-660S is equipped with a 10/100Base-T Ethernet controller. To utilize it, change the device name when the NP-660S is first turned on.

Step		
1	Click "Start/Settings/Control Panel"	
2	Doubleclick "Network and Dial-up Connections"	
3	Find the default device name. Change it to a unique one depending on the plan of individual LANs.	
4	If the NP-660S is a node of a LAN with DHCP servers, it is now available.	
5	If the NP-660S is a node of a LAN with fixed IP server, please consult with MIS to get specific IP address. Click "Start/Settings/Control Panel". Doubleclick "Network and Dial-up Connections" and update the IP address.	
6	Use the cec utility "Save registry" to save this change.	

3.3.2 ActiveSync

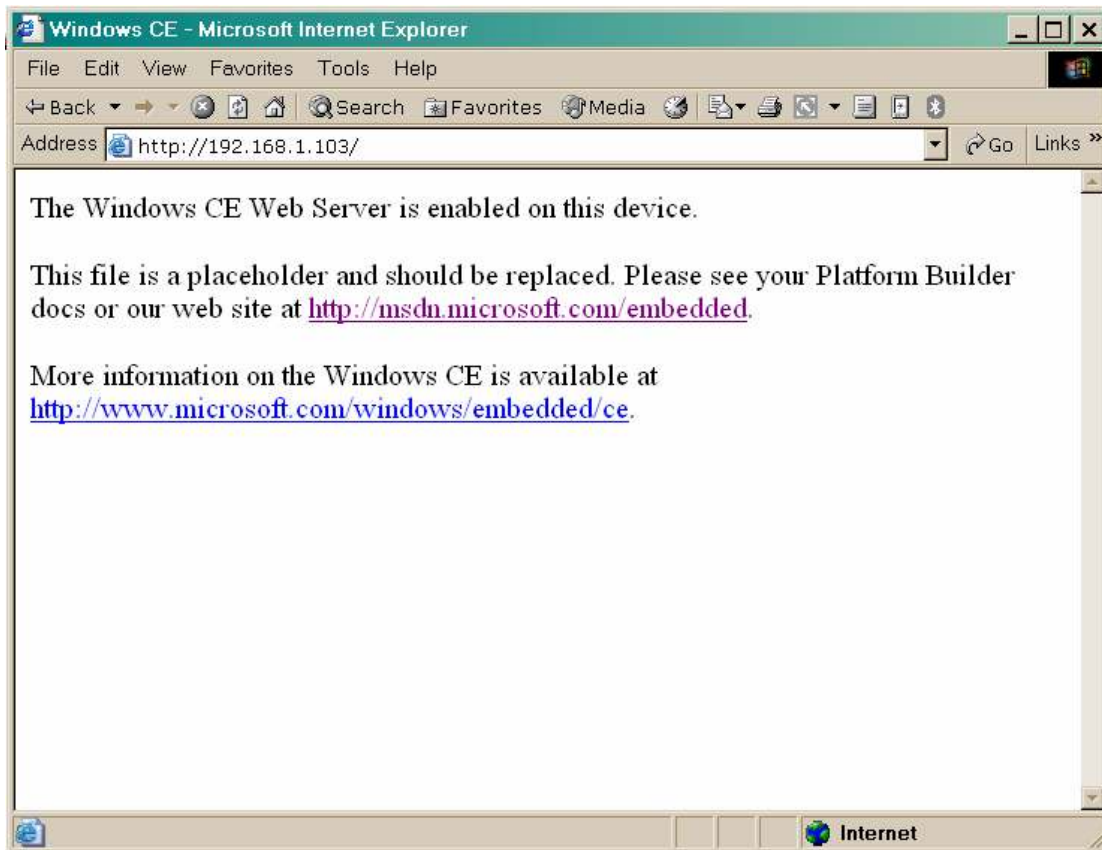
The NP-660 uses the COM1 RS232 to connect to the PC:

Step		
1	Make sure the Microsoft ActiveSync service is properly installed on the host PC.	 <p>Microsoft ActiveSync</p>
2	Click the "Connection Settings..."	
3	Allow serial cable or infrared connection to this COM port .	
4	Connect the MT-606 Com1 RS232 and PC RS232 by the RS232 ActiveSync cable.	

	<p>ActiveSync cable</p> <p>PC COM1 9P D-SUB Female</p> <table border="1"> <tr><td>1,4,6 short</td></tr> <tr><td>2 RD</td></tr> <tr><td>3 TD</td></tr> <tr><td>5 GND</td></tr> <tr><td>7 RTS</td></tr> <tr><td>8 CTS</td></tr> </table>	1,4,6 short	2 RD	3 TD	5 GND	7 RTS	8 CTS	<p>CN5 COM1 [RS232] 9P D-SUB Female</p> <table border="1"> <tr><td>3 TD</td></tr> <tr><td>2 RD</td></tr> <tr><td>5 GND</td></tr> <tr><td>8 CTS</td></tr> <tr><td>7 RTS</td></tr> </table>	3 TD	2 RD	5 GND	8 CTS	7 RTS
1,4,6 short													
2 RD													
3 TD													
5 GND													
7 RTS													
8 CTS													
3 TD													
2 RD													
5 GND													
8 CTS													
7 RTS													
5	<p>Run NP-660S \\Windows\repllog.exe</p>												
6	<p>Follow the onscreen instructions to establish a partnership and synchronize your NP-660S with your desktop computer.</p>												
7	<p>Now you can synchronize the information between the NP-660S and host computer with ActiveSync.</p>												

3.3.3 Web browser

The NP-660S built-in Windows CE OS includes Microsoft Pocket Internet Explorer. It can be used to browse web pages on World Wide Web via LAN or dial-up connection.



3.4 Application program development

The NP-660S is bundled with built-in Windows CE operating system. In real applications users need to execute various applications programs on it. However, unlike its other family the Windows CE is a hardware-dependent operating system. That is to say, Windows CE application programs are only portable in the source code level. Users must rebuild the runtime file for a different Windows CE platform even though the source code may not be changed at all.

The following development tools must be installed on the PC:

- Microsoft Embedded Visual C++ 4.0
- Microsoft Embedded Visual C++ 4.0 Service Pack 1
- NP-660 SDK

3.4.1 Microsoft Embedded Visual C++ 4.0

System Requirements

To use Microsoft Embedded Visual C++ 4.0 you need the following:


- A desktop computer with a Pentium-II class processor, 450MHz or faster
- Microsoft Windows® 2000 Professional SP2, Microsoft Windows 2000 Server

SP2, or Microsoft Windows XP Professional.

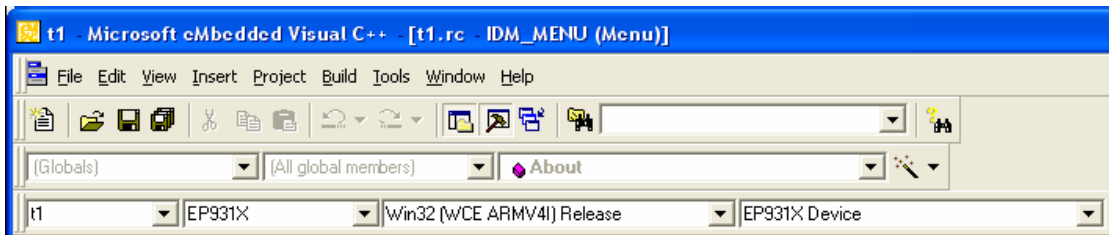
- 96MB (128MB recommended) memory for Windows 2000 Professional or Windows XP Professional. 192MB (256MB recommended) memory for Windows 2000 Server.
- CD-ROM drive required
- VGA or higher-resolution monitor. A Super VGA (800x600 or larger) monitor is recommended.
- Mouse or compatible pointing device.
- 200MB hard disk space.

3.4.2 NP-660 SDK

The MT606 SDK provides developers with access to an extensive set of functions that are specific to the NP-660 hardware.

Step	Installing the MT606 SDK	
1.	<p>Download from NP-660S SDK CD find the EP931X_SDK.msi file. Double click the file's name start the Setup Wizard.</p>	
2.	<p>The installer will be prompted for acceptance of a license agreement. Following that, the SDK should install itself automatically on the host machine without further operator intervention.</p>	
3.	<p>When installation is complete the following messages should appear: “ Completing the 931x Setup Wizard ”. The installer must press the “ Finish ” button in the install window to exit.</p>	

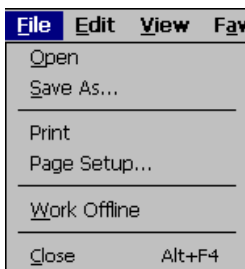
Open the VC++, in WCE Configuration toolbars select EP931X.



3.5 Print

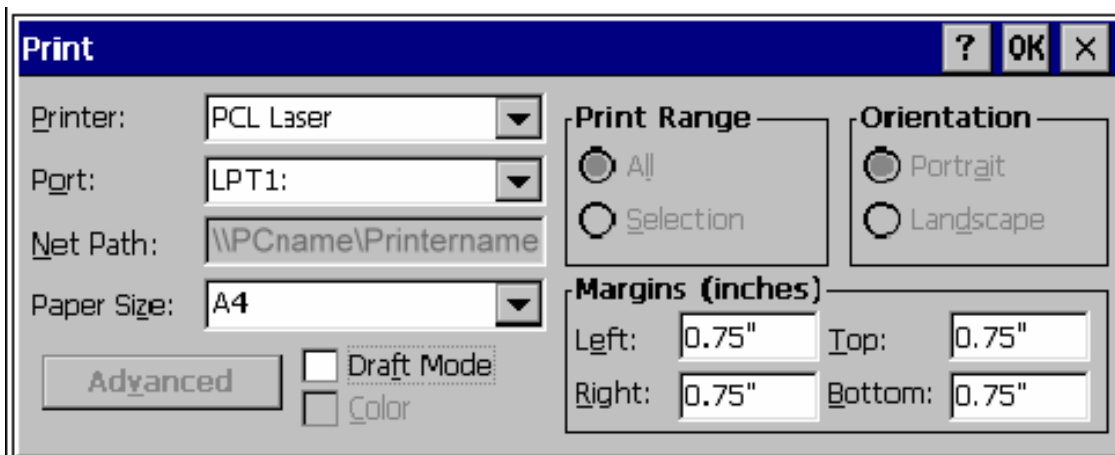
MT606CV2 support PCL language printer. You can connect a PCL printer at USB Host port or via Network connect to a shared printer.



From Internet Explorer or user's application menu click

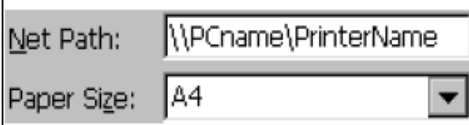



“File”/” PageSetup...” will appear print setup dialog.

After the “ PageSetup...” ,click “ File”/“ Print”, printer will print out the data.



<p>Printer:</p> <p>PCL Inkjet: HP DeskJet series inkjet printer. Support color printer.</p> <p>PCL Laser: HP LaserJet printer.</p>	
<p>Port:</p> <p>COM1: 57600 / COM1: 9600: via COM1 RS232 connect to printer</p> <p>IRDA: MT606CV1 doesn't support IRDA connect.</p> <p>LPT1: When connect a USB printer to MT606's USB Host port will appear this item.</p> <p>Network: via network connect to a</p>	

<p>shared printer.</p>	
<p>Net Path:</p> <p>When select “Network” will enable the Net Path field. Key-in the computer name and shared printer name.</p>	
<p>Paper Size:</p>	
<p>Draft Mode:</p>	<input checked="" type="checkbox"/> Draft Mode

DesktopPCsharestheprinter.

